



## Hotel Expo Praha

Za Elektrárnou 3 . 170 00 Praha 7 . Czech republic  
Tel.: +420 266 712 470 Fax.: +420 266 712 469  
www.expoprag.cz hotel@expoprag.cz








## CONFERENCES & MEETINGS 2024

Hotel Expo features 3 conference rooms with maximum capacity 90 persons, daylight, Wi-fi internet connection and air-condition.



# MEETING ROOMS

## CAPACITY DIMENSIONS LAYOUT

	U-shape	Boardroom	Classroom	Theatre	Banquet	Area Sq m	Room Dimensions Sq m	Ceiling Height m	Door Dimensions m	Floor
										
Conference room	30	30	50	90	100	115,00	14 x 8	2,9	2,34 x 1,28	V.
Meeting room	15	20	14	20	20	33,40	7,2 x 4,6	2,9	1,97 x 0,8	GRND

## PRICELIST OF LEASE

	Hour Rate	Daily Rate (1-3 days)	Daily Rate (over 3 days)
Conference room	CZK 1300,00 (min. rent 4 Hrs.)	CZK 9.900,00	CZK 9.500,00
Meeting room	CZK 550,00 min. rent 4 Hrs.)	CZK 4.500,00	CZK 4.200,00



## ADDITIONAL SERVICES

Parking (1 hour)	CZK 40,00
Parking (24 hours)	CZK 350,00

**TECHNICAL EQUIPMENT**  
We will send you required  
prices on request

QUALITY . PROFESSIONALISM . EXPERIENCES

## FOOD AND BEVERAGE SERVED DURING THE MEETINGS

welcome drink (sparkling wine 1dl )	CZK 75,00
coffee/tea	CZK 60,00
mineral water	CZK 55,00
coca cola 0,2l	CZK 70,00
juice 0,2l	CZK 70,00
fruit 1 pt (according to seasonal offer)	CZK 100,00
open sandwich 1 pc	CZK 45,00
Sandwich	from CZK 90,00
home made apple strudel – 1 pc	CZK 50,00
home made small cake – 2 pcs	CZK 70,00
croissant 2 pcs	CZK 60,00
lunch or dinner – buffet style	CZK 580,00
lunch or dinner – 3 course menu soup, main course, dessert	CZK 520,00



WILLINGNESS AND TAILOR-MADE APPROACH

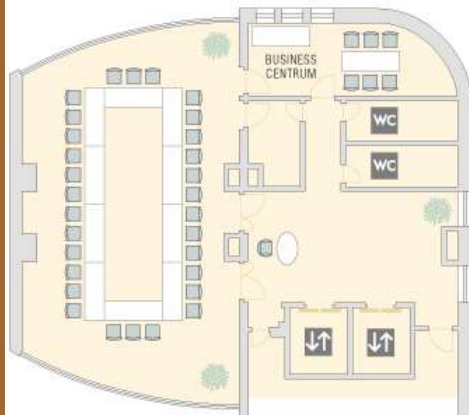
# CONFERENCE ROOM - LAYOUT



## ŠKOLNÍ USPOŘÁDÁNÍ

SCHOOL LAYOUT / SCHULANORDNUNG

Maximálně 60 míst / Maximally 60 Places / Maximum 60 Plätze



## „ŽENEVA“

“GENEVA” / “GENE”

Maximálně 30 míst / Maximally 30 Places / Maximum 30 Plätze



## DIVADELNÍ USPOŘÁDÁNÍ

THEATRE LAYOUT / THEATERANORDNUNG

Maximálně 90 míst / Maximally 90 Places / Maximum 90 Plätze



## RESTAURAČNÍ USPOŘÁDÁNÍ

RESTAURANT LAYOUT / RESTAURANTSANORDNUNG

Maximálně 36 míst / Maximally 36 Places / Maximum 36 Plätze

## LOCATION

Hotel is located nearby the city centre, next to the Prague Exhibition Centre and Stromovka park.

## DIRECTIONS



**Underground: Nádraží Holešovice stop – line C – exit Výstaviště than 1 stop by tram nr. 6 or 12 (direction Výstaviště)**

**Tram: lines nr. 6, 12, , 17 (tram stop Výstaviště)**

**By car: direct from highway(54 parking places in hotel garage)**

## ENTERTAINMENT AROUND THE HOTEL

Krizik's fontaine, Theatre Spirála, Sport's hall Tipsport Arena, Swimming pool, Sauna, Massage, Tennis, Fitness centre, Jogging in Stromovka Park, Shooting range at Výstaviště, National Technical Museum, Veletržní palác – modern art exhibition.

## TERMS OF CANCELLATION

Within 7 days before the conference – free of charge

Less than 7 days before the conference, 50 % of the agreed price of service will be charged

Less than 3 days before the conference, 100 % of the agreed price of service will be charged

VAT and all the charges are included in the price quotation.

Price fluctuation is potential. Pricelist is valid until 31.12.2024